

**IN THIS ISSUE**[Successful EASTEC show](#)[SolidCAM in Medical Device Manufacturing](#)[Valuable tips and tricks for our users](#)**Successful EASTEC show**

The photo shows our U.S. team at the EASTEC show: *Anthony Calderone, Matt Soucy and Russ Akins (from left to right).*

Matt Soucy, our VP of Sales/Operations for the U.S., commented: "This year, we not only found considerable interest from the show attendees, but also from other exhibiting manufacturing companies. In the past, it seems like many manufacturers were content to stay with older technology that 'got the job done'. Today they are much more interested in finding newer, more powerful, efficient and less costly alternatives like SolidCAM to stay at the competitive edge."

**SolidCAM infos**

- [Download brochure "What's new in SolidCAM2009"...](#)
- [Order free Demo CD](#)

The challenging economy has not stopped the manufacturing business, as the activity level at the EASTEC show in West Springfield, Massachusetts, demonstrated. EASTEC, held on May 19-21, is the largest industrial tool trade show on the American East Coast and drew this year 570 exhibitors and about 15,000 attendees.

SolidCAM made a strong appearance at this show, teaming up with its regional reseller [R&D Technologies](#) to demonstrate the new features of SolidCAM 2009. After the exhibition, we partnered with R&D Technologies to hold a series of open houses to inform about the power and ease-of-use of *SolidCAM+SolidWorks*. In addition, R&D Technologies is now offering various [seminars](#) to deepen the knowledge about our integrated CAD/CAM solution.

This year the EASTEC show spotlighted especially the medical device industry. It is interesting to note, that EASTEC officials forecast this industry will become the largest manufacturing sector in the United States, overtaking the automotive industry. This observation fits perfectly with our next story below.

Dear reader, please enjoy the summer and our Newsletter.

Emil Somekh  
Managing Director  
SolidCAM Ltd.

**• SolidCAM in Medical Device Manufacturing**

[Socinser](#), a fast-growing company from Gijón, Spain, develops and manufactures medical devices like implants and surgical equipment to be used for hips, vertebral columns, knees, feet and the fastening of ligaments. Furthermore the company offers hospital equipment designed in close teamwork with medical scientists and other health professionals.

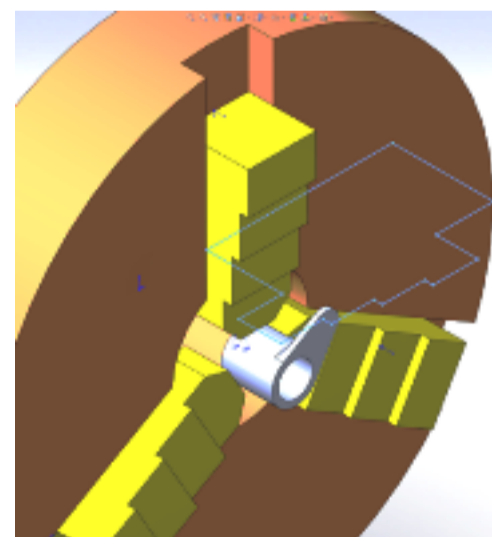


Four years ago, Socinser replaced their outdated CAD and CAM systems by the combined solution *SolidWorks+SolidCAM*. Luis Costales Ponga, one of Socinser's engineers, describes the benefits: "SolidCAM is like a normal SolidWorks module that the user activates in the same user environment. The associativity between SolidWorks and SolidCAM enables the automatic synchronization of the NC programs, once the design model has been changed." He continues: "As we try to reproduce the anatomy of the patient, we have to work with very complex organic surfaces that are impossible to manufacture without a powerful 3D CAM system. That is why SolidCAM plays an essential role in the process of converting complex parts to reliable NC programs. This saves us a lot of time compared to the solution we used before."

[Read more about SolidCAM at Socinser...](#)

**• Valuable tips and tricks for our users**

With the launch of SolidCAM2008 we introduced a new tutorial concept under the label "SolidCAM Professor". It contains a set of screen-recordings, tutorials and videos, demonstrating the rich functionality of SolidCAM and its seamless integration in SolidWorks. We have now extended this concept also to cover tips and tricks for our users.



If you want to view the "Valuable tips!" videos in this series, simply click on the following links:

- [Configurations in Milling](#)
- [Configurations in Turning](#)
- [HSM Rough cutting](#)
- [Change Tool Data](#)

For example, the "Configurations in Turning" video demonstrates how to achieve toolpath associativity for different configurations of Turning or Mill-Turn parts. By the generation of envelope sketches for defined stock models and fixtures in Turning and Mill-Turn, the toolpaths can be automatically synchronized.

If you would like to recommend new topics for the "SolidCAM Professor" videos, please send a note to the editor.